

# SUPERIOR ENGINEERING SERVICES



<http://www.superiorengg.in>



# About

➤ Superior Engineering Services Professionally managed Mumbai based consulting firm

➤ It Provides, FEED, Proposals & Detailed Engineering Services to Onshore, off-shore, Pipelines & Process Plants & Equipment Sector



**Superior**   
Engineering Services

<http://www.superiorengg.in>

# What Differentiates Us



Our high integrity levels, Multicultural mindset & Dedication to use all necessary resources to meet our commitments

➤ **Superior.....** Symbol of the Better  
Performance in Engineering Services

# VISION

✓ To be among the leading best-value Engineering Services resulting in Efficiency & Reliability for our Customers

## CORE VALUES

- Our positive attitude, teamwork, & determination to build a large professionally managed firm shall be the driving force behind our success
- We shall value & build long term relationships and will be resourceful in meeting all commitments & challenges



# OUR VALUED SERVICES

## ✓ Design & Planning

Superior Engineering Services offer the best design and planning services to client across various nations. Design work involves projects from multidisciplinary branches such as mechanical and civil engineering. We develop mechanical parts design and drafting on various advance software by experienced and skilled engineers. We also deal with land development, boundary and topographic surveys using state-of-the-art GPS, GIS & CAD technology.



# OUR VALUED SERVICES

## ✓ Corrosion Management

A corrosion management system includes, building a system that defines all possible threats for each item in the asset. Threats shall then be monitored, either by process data, monitoring equipment, sampling or inspection. This means that we are involved in all aspects of an asset's lifecycle, including everything from topside, to subsea and onshore. With Superior Engineering Services's corrosion management services and solutions, companies can maintain and protect assets from corrosion before it becomes a problem.



# OUR VALUED SERVICES

## ✓ Material Selection

Selecting the right material for the right application is the start point of any Engineering design. It not only helps in minimizing the costs but also helps in achieving the performance goals desired. The properties of material and the life cycle costs are considered for selection of suitable material for any industrial application. We have expertise in Material Selection and specialize in preparation of Material Selection Reports.



# OUR VALUED SERVICES

## ✓ Pipeline Integrity Management

Superior Engineering Services's pipeline integrity consultants employ risk based techniques to prevent failures from occurring and assign mitigation actions to real time threats. Our threat identification and risk assessment solution incorporates tools for root cause analysis. Where defects are identified through in service inspection.



## ✓ Cathodic Protection

We are the providers of detailed engineering services, for cathodic protection of gas & oil pipelines, marine structures and storage facilities. We provide a wide range of cathodic protection (CP) services and solutions that prevent and control corrosion as a part of asset integrity management. We have highly experienced engineers for cathodic protection and offer various types of solutions.



# OUR VALUED SERVICES

## ✓ Risk Based Inspection (RBI)

RBI is a methodology to optimise inspection. In order to reduce the amount of inspection, and thereby improve cost efficiency, we recommend a risk based inspection (RBI) approach.



The objective is to give the highest priority and focus on inspection to items with high risk, while the items with low risk will be reduced or excluded from the normal inspection program. This allows companies to focus your resources more strategically, while maintaining operational safety and stability.

## ✓ Non Destructive Testing (NDT)

We offer standard and advanced NDT services, onshore, offshore & subsea. NDT is fundamental in ensuring the safety of assets for personnel,



environment and investors. Failure of a component, structure or weld can cause significant hazard to the environment and often leads to significant costs. Ensure safe, continuous and cost effective performance of your asset, basing your decisions on reliable NDT data on the assets condition.

# OUR VALUED SERVICES

## ✓ Reliability Centered Maintenance (RCM)

RCM aims to reduce costs, improve safety, and eliminate maintenance tasks that are not effective or appropriate for a given piece of machinery.



Since the end product of a well executed RCM analysis is that an appropriate maintenance strategy will be selected for each piece of equipment, the impact is an overall improvement of reliability.

## ✓ Reliability Availability Maintainability (RAM)

RAMS refers to Reliability, Availability & Maintainability Study



which is a decision making tool used to identify how to increase the availability of the system, and thus increase the overall profit as well as reducing the life cycle costs.

<http://www.superiorengg.in>

# OUR VALUED SERVICES

## ✓ Plants Fitness for Services (FFS)

Fitness for service assessment is a multidisciplinary engineering analysis that ensures all process and plant equipment such as pressure vessels, piping, and tanks operate safely and reliably for the desired period of operation and until the next turnaround or planned shutdown occurs in the future.



ASME, API, BS 5500 & other recognized design codes provide rules/guidelines for a general procedure for assessing fitness for service. This assessment procedure evaluates the remaining strength of the equipment in its current state that may have degraded from its original condition. Common degradation mechanisms include corrosion, localized corrosion, pitting and crevice corrosion, hydrogen attack, embrittlement, fatigue, high temperature creep, and mechanical distortion.

# OUR VALUED SERVICES

## ✓ Inspection Work Scope Development

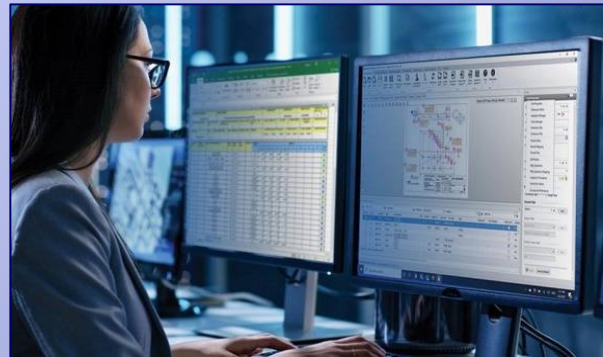
An effective program creates a process for clarifying standards and requirements, established means and methods for managing the process, defines responsibilities



& accountabilities, & adds another avenue to more effectively manage the supply chain, while it reduces misunderstanding and potential conflict. It systematically manages quality and increases productivity, eliminates or reduces waste, and ultimately improves profitability.

## ✓ Inspection Data Management & Analysis

We make configuring the system for your unique operating environment simple & give you all the tools you need to create

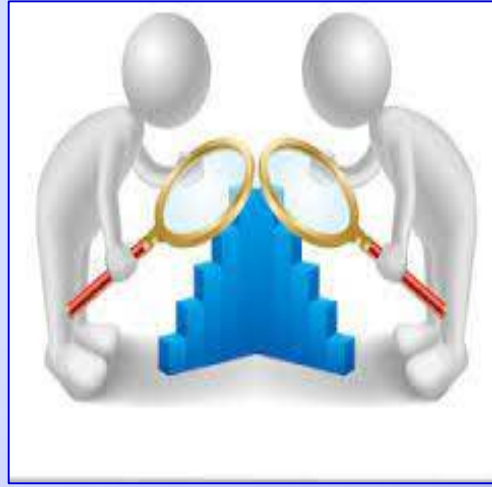


& implement optimized Preventative Maintenance and Inspection plans that ensure you focus your resources on your most critical equipment at the right time.

# OUR VALUED SERVICES

## ✓ Process Surveillance & Data Management

Our team takes on the mammoth task of quality management, data governance, migration, integration, implementation, and archiving with expertise and skill. Preserve your data, enhance security and get clean, organized



and filtered data for your perusal. We develop comprehensive understanding of upstream process systems. Collaborate with multi discipline teams to build surveillance plans and review finding, perform real-time process, broad technical expertise in oil and gas process equipment design and operation.

## ✓ Comprehensive Solution On Refractory Lining Systems

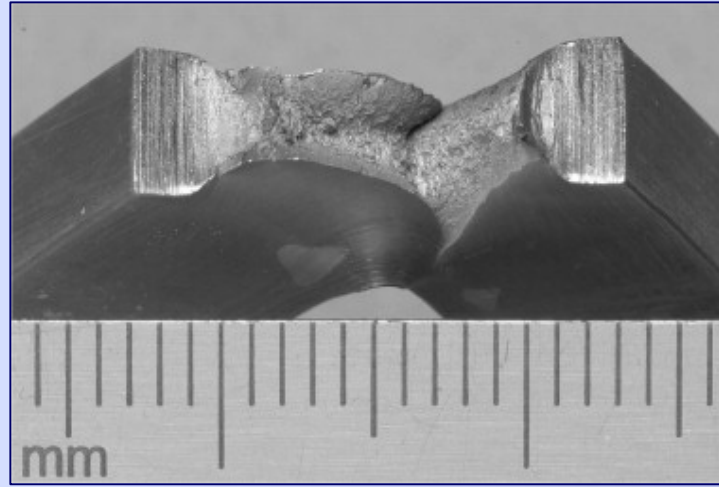
This covers design, engineering, procurement, installation commissioning, maintenance for any process industries that have refractory lining systems and root cause analysis with solutions in case of a premature failure.



# OUR VALUED SERVICES

## ✓ Failure Analysis & Root Cause Investigation

Superior Engineering Services offer a comprehensive failure analysis service include complete physical, Chemical & surface



analysis of both metallic or non metallic materials aimed at the identification of the damage and failure mechanisms diagnosis of the root cause of failure and making recommendations that will minimize the risk of repeat failures more importantly, provide timely and cost effective solutions. Recommendations may concern material selection and improvements in component design, quality assurance issues in manufacturing and welding.

# OUR VALUED SERVICES

## ➤ Safety

Safety covers Audits (Occupational Health and Safety Audit as per IS 14489:2018), Fire, Electrical, Risk Management Study, Process Safety Management, Legal and Management Studies (ISO 9001:2015, ISO 14001:2015, ISO 45001:2018).



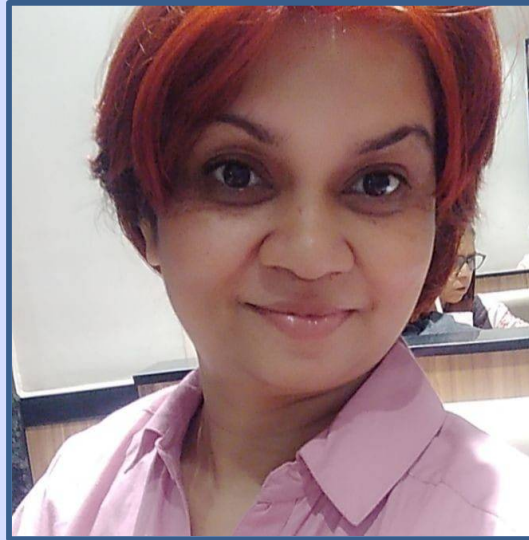
## ➤ Training

To empower professionals for a better future, for their employees or customers, Superior Engineering Services also extends training and seminars under corporate training.



# Team of Superior Engineering Services

**Dr. Sharmilee** is the founder and the proprietor of Superior Engineering Services and has a good knowledge and experience of the engineering industry. She has worked in various capacities in technical and management functions prior to founding Superior Engineering Services.



**Dr. Sharmilee**

**Dr. Sharmilee** has a Ph. D and Master Degree in Metallurgical Engineering from IIT Kharagpur. She has done Graduate Research program from University of Manitoba, Canada. She has PGDHRM degree from Symbiosis, Pune. She was a member of ASM (American Society Membership). She has a team of Qualified and Experienced members in Superior Engineering Services.



**Superior Engineering Services**

**has a Team of Qualified & Experienced Engineers**

# CONNECT WITH US 😊

➤ **Website** <http://www.superiorengg.in>

➤ **Phone** : +91 9594647273

➤ **Email Us** : [sharmilee@superiorengg.in](mailto:sharmilee@superiorengg.in)  
: [shamileesarkar@gmail.com](mailto:shamileesarkar@gmail.com)

➤ **Our Office** : 104, D-8, Rutu Estate,  
Thane west, Mumbai - 400607



<http://www.superiorengg.in>

*Thank You*